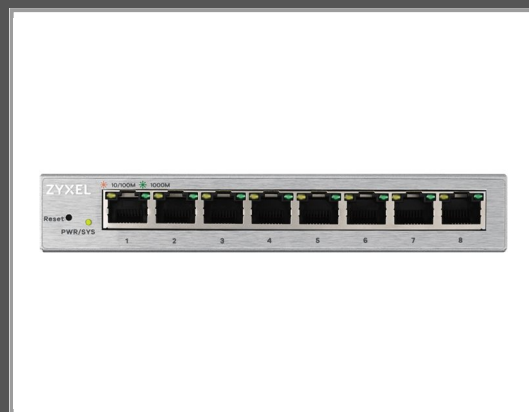


ZyXEL GS1200-8 - Switch - Managed

8 x 10/100/1000 - desktop

Group	Network Equipment
Manufacturer	ZyXEL
Manufacturer item no.	GS1200-8-EU0101F
EAN/UPC	4718937600571



Description

This switch comes with a user-friendly web-based set-up wizard that walks you through setup, configuration and management - including configuration backups and firmware upgrades - quickly and easily. With a few simple clicks, your network will be humming along, so you can get back to business.

Based on the IGMP (Internet Group Management Protocol) query and report messages, the switch forwards traffic only to the ports that request the multicast traffic rather than to all ports. It helps to optimize multicast performance and is especially useful for bandwidth-intensive IP multicast applications such as online media streaming and gaming.

Main features

Product Description	Zyxel GS1200-8 - switch - 8 ports - Managed
Device Type	Switch - 8 ports - Managed
Subtype	Gigabit Ethernet
Ports	8 x 10/100/1000
Performance	Switching capacity: 16 Gbps
Capacity	Multicast groups: 128
MAC Address Table Size	4K entries
Jumbo Frame Support	9KB
Routing Protocol	IGMPv2, IGMP, IGMPv3
Remote Management Protocol	HTTP
Features	Flow control, VLAN support, auto-uplink (auto MDI/MDI-X), IGMP snooping, port mirroring, Weighted Round Robin (WRR) queuing, Broadcast Storm Control, firmware upgradable, wall mountable, Quality of Service (QoS), fanless, Energy Efficient Ethernet, loop prevention, 192KB packet buffer, Class of Service (CoS), tagged VLAN, metal housing, Link Aggregation, Weighted Round Robin (WRR), port-based QoS
Compliant Standards	IEEE 802.3u, IEEE 802.3z, IEEE 802.1Q, IEEE 802.3ab, IEEE 802.1p, IEEE 802.3x, IEEE 802.3az
Dimensions (WxDxH)	15.5 cm x 8.5 cm x 2.6 cm
Weight	325 g
Localisation	Europe

Extended details

General

Device Type	Switch - 8 ports - Managed
-------------	----------------------------

Enclosure Type	Desktop
Subtype	Gigabit Ethernet
Ports	8 x 10/100/1000
Performance	Switching capacity: 16 Gbps
Capacity	Multicast groups: 128
MAC Address Table Size	4K entries
Jumbo Frame Support	9KB
Routing Protocol	IGMPv2, IGMP, IGMPv3
Remote Management Protocol	HTTP
Features	Flow control, VLAN support, auto-uplink (auto MDI/MDI-X), IGMP snooping, port mirroring, Weighted Round Robin (WRR) queuing, Broadcast Storm Control, firmware upgradable, wall mountable, Quality of Service (QoS), fanless, Energy Efficient Ethernet, loop prevention, 192KB packet buffer, Class of Service (CoS), tagged VLAN, metal housing, Link Aggregation, Weighted Round Robin (WRR), port-based QoS
Compliant Standards	IEEE 802.3u, IEEE 802.3z, IEEE 802.1Q, IEEE 802.3ab, IEEE 802.1p, IEEE 802.3x, IEEE 802.3az
Status Indicators	Port status, port transmission speed, power
	Expansion / Connectivity
Interfaces	8 x 1000Base-T RJ-45
	Power
Power Device	External power adapter
Power Consumption Operational	4.37 Watt
	Miscellaneous
Compliant Standards	C-Tick, EMC, FCC, RoHS, EN 60950-1, LVD, EMC Class A, EMC Class B, BMSI
Localisation	Europe
	Dimensions & Weight
Width	15.5 cm
Depth	8.5 cm
Height	2.6 cm
Weight	325 g
	Dimensions & Weight (Shipping)
Shipping Width	16.1 cm
Shipping Depth	9 cm
Shipping Height	9.5 cm
Shipping Weight	497 g
	Environmental Parameters
Min Operating Temperature	0 °C
Max Operating Temperature	40 °C
Humidity Range Operating	10 - 90% (non-condensing)
Min Storage Temperature	-40 °C

Humidity Range Storage

10 - 90% (non-condensing)

Technical data © 1WorldSync. Subject to technical modifications and errors.