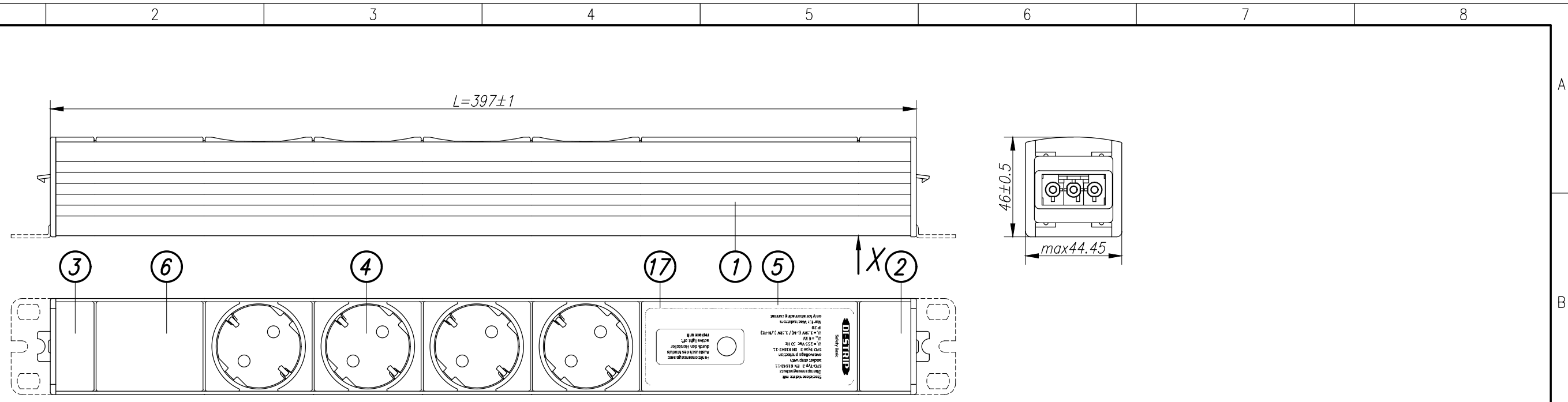


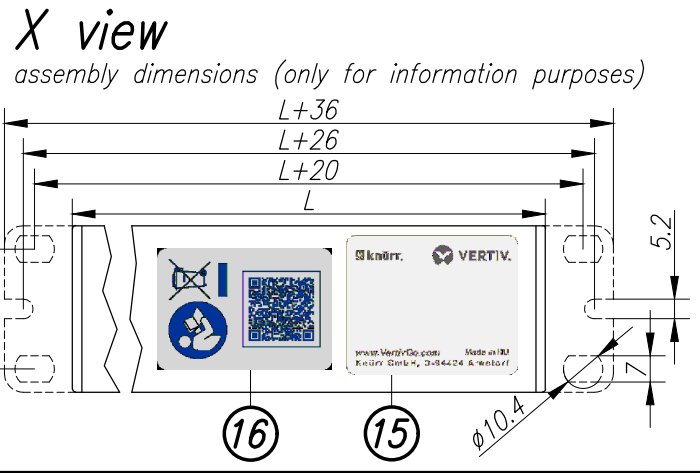
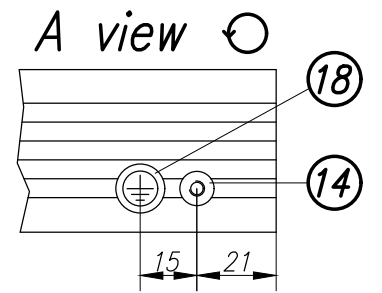
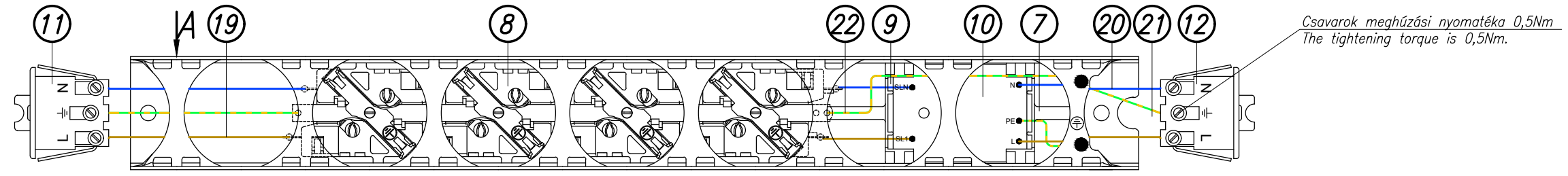
Disclosure and photocopying of this document, exploitation and communication of its contents are not permitted, unless permission is expressly granted. All rights are reserved.

DI-STRIP

Weitergabe sowie Vervielfältigung dieser Unterlage, Verwertung und Mitteilung ihres Inhalts nicht gestattet, soweit nicht ausdrücklich zugestanden. Alle Rechte vorbehalten.



Internal wiring scheme, inlets and outlets shown frontside down



Example of label:

Type selection							
Drawing no.	Description	L (mm)	Color of chassis	No. of sockets	Gross weight (kg)	Net weight (kg)	External dimensions of packing box (mm)
03.316.204.6	DIS-EEV CEE7/7-16A 4P SB	397	RAL2003 pastel orange	4	0,70	0,55	480x60x80
03.316.204.1	DIS-EEV CEE7/7-16A 4P SB	397	RAL7035 light grey	4	0,70	0,55	480x60x80

No.	Qty	Code	Description	Material	Drawing no.	External dimensions of packing box (mm)
19	2	ST	Vezeték barna 1,5mm ²	Electric cord brown	8.768.3867	L=80(EO-EV)
20	2	ST	Vezeték kék 1,5mm ²	Electric cord blue	8.768.2706	L=80(EO-EV)
21	2	ST	Vezeték zöld-sárga 1,5mm ²	Electric cord green-yellow	8.768.2885	L=100(EO-EV)
22	1	ST	Vezeték zöld-sárga 1,5mm ²	Electric cord green-yellow	3.768.2670	L=160(EO-EO)

A belső vezetékvezés komponensei. / Components of internal wiring.

Technical data:
 - DIN 49440 SCHUKO socket 16A
 socket spacing 50mm, torsion of sockets 45°
 - with overvoltage protection module
 - output GST18i socket on side part

Approvals/certificates:
 - CE marking according to: LVD (low voltage directive),
 RoHS (restriction of hazardous substances)
 - BV-BG certification (factory inspected)

Power cord:
 Type: -
 Length: -
 Plug: GST18i

Material/Finish:
 Chassis: closed sheet steel extrusion, zincplated, powder-coated texture
 Plastic parts: Vampamid 6 0024 VO (UL94) or similar, recyclable
 Internal conduction: brass conductor rails and copper wires
 Internal copper wires: H07V-K 1,5mm²

Color:
 Chassis:
 Plastic parts: RAL7035 light grey

Packaging:
 Packing box (csomagolódoboz)
 Supply schedule:
 Socket strip (1 piece)
 Mounting bracket (2 pieces) 3.768.2608
 User manual (1 piece) 03.300.999.1

<p>Dimensions in mm</p>	General tolerances		Finish	Material	Sheet														
	ISO 2768-m																		
<table border="1"> <thead> <tr> <th>Rev.</th> <th>Change</th> <th>Date</th> <th>Name</th> </tr> </thead> <tbody> <tr> <td></td> <td></td> <td></td> <td></td> </tr> </tbody> </table>	Rev.	Change	Date	Name					<table border="1"> <thead> <tr> <th>Date</th> <th>Name</th> </tr> </thead> <tbody> <tr> <td>28.04.2010</td> <td>Kovács</td> </tr> <tr> <td>28.04.2010</td> <td>Szabó</td> </tr> </tbody> </table>	Date	Name	28.04.2010	Kovács	28.04.2010	Szabó	Description			Scale
	Rev.	Change	Date	Name															
Date	Name																		
28.04.2010	Kovács																		
28.04.2010	Szabó																		
<p>Drawn</p> <p>Checked</p> <p>Approved</p>			<p>DIS-EEV CEE7/7-16A 4P SB</p>																
			<p>Drawing no.</p> <p>03.316.204.X</p>																
<p>Platine:</p>		<p>File:</p>		<table border="1"> <thead> <tr> <th>Gross weight</th> <th>Net weight</th> <th>External dimensions of packing box</th> </tr> </thead> <tbody> <tr> <td>kg</td> <td>kg</td> <td>mm</td> </tr> </tbody> </table>	Gross weight	Net weight	External dimensions of packing box	kg	kg	mm									
Gross weight	Net weight	External dimensions of packing box																	
kg	kg	mm																	