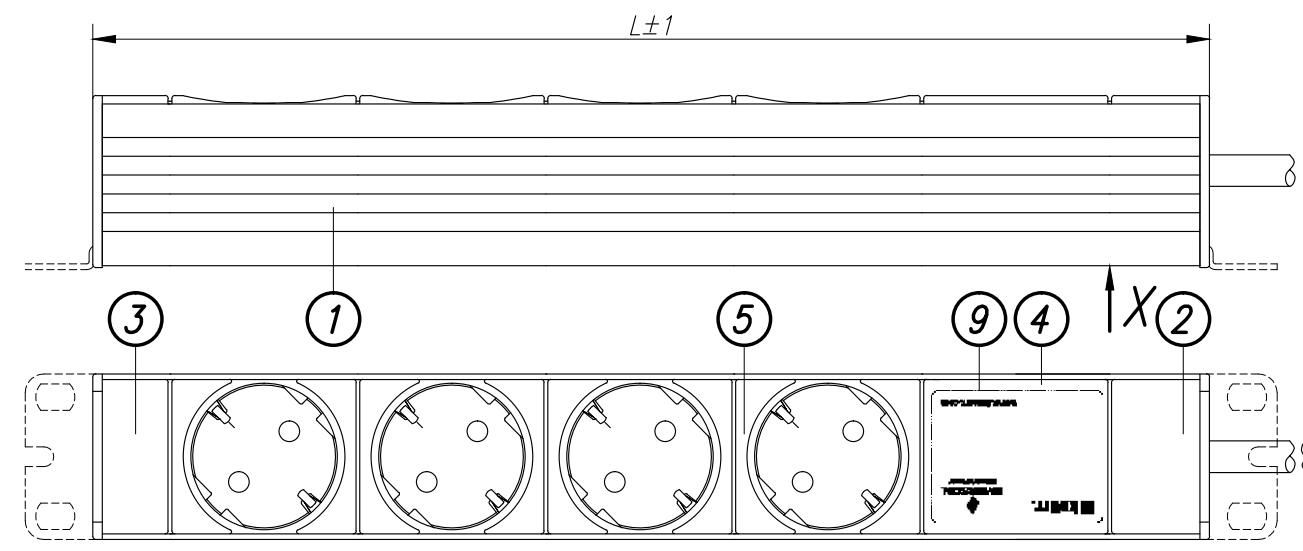


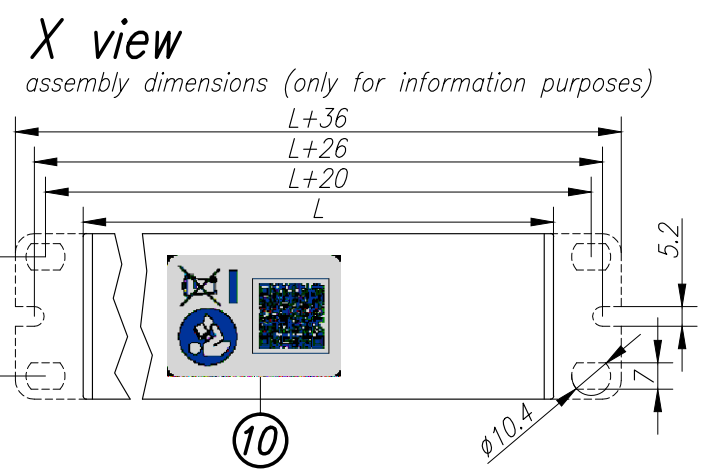
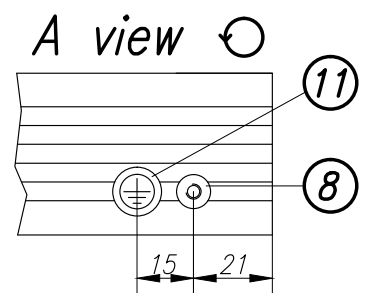
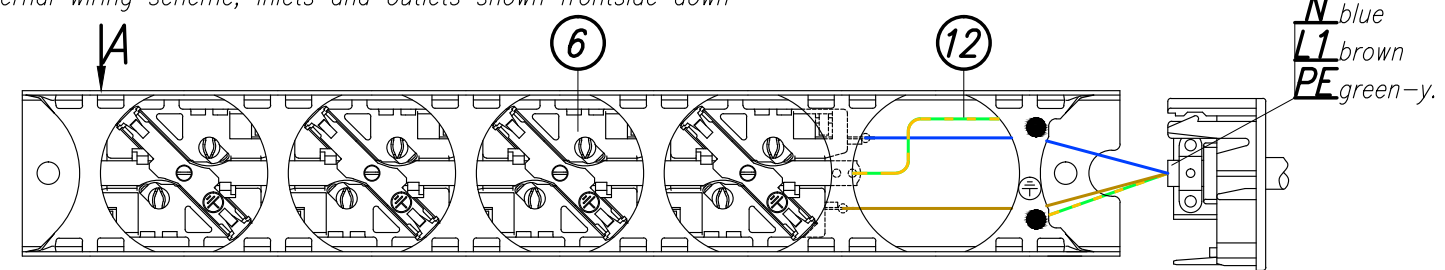
Disclosure and photocopying of this document, exploitation and communication of its contents are not permitted, unless permission is expressly granted. All rights are reserved.

DI-STIRP

Weitergabe sowie Vervielfältigung dieser Unterlage, Verwertung und Mitteilung ihres Inhalts nicht gestattet, soweit nicht ausdrücklich zugestanden. Alle Rechte vorbehalten.



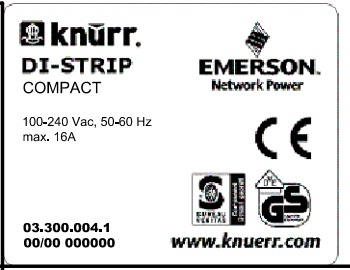
Internal wiring scheme, inlets and outlets shown frontside down



**Type selection**

| Drawing no.  | L   | Color of chassis       | No. of sockets | Gross weight | Net weight | External dimensions of packing box |
|--------------|-----|------------------------|----------------|--------------|------------|------------------------------------|
| 03.300.015.6 | 847 | RAL2003 pastel orange  | 15             | 1,7 kg       | 1,47 kg    | 985x60x75 mm                       |
| 03.300.015.1 | 847 | RAL7035 light grey     | 15             | 1,7 kg       | 1,47 kg    | 985x60x75 mm                       |
| 03.300.011.6 | 647 | RAL2003 pastel orange  | 11             | 1,37 kg      | 1,19 kg    | 680x60x75 mm                       |
| 03.300.011.1 | 647 | RAL7035 light grey     | 11             | 1,37 kg      | 1,19 kg    | 680x60x75 mm                       |
| 03.300.007.6 | 447 | RAL2003 pastel orange  | 7              | 1,06 kg      | 0,91 kg    | 480x60x80 mm                       |
| 03.300.007.4 | 447 | RAL5018 turquoise blue | 7              | 1,06 kg      | 0,91 kg    | 480x60x80 mm                       |
| 03.300.007.1 | 447 | RAL7035 light grey     | 7              | 1,06 kg      | 0,91 kg    | 480x60x80 mm                       |
| 03.300.004.6 | 297 | RAL2003 pastel orange  | 4              | 0,85 kg      | 0,7 kg     | 480x60x80 mm                       |
| 03.300.004.1 | 297 | RAL7035 light grey     | 4              | 0,85 kg      | 0,7 kg     | 480x60x80 mm                       |

**Technical data:**  
 - 4x DIN 49440 SCHUKO socket 16A  
 socket spacing 50mm, torsion of sockets 45°



**Load rating:**  
 100-240 Vac, 50-60 Hz  
 Input: 1x 16 A  
 Output: 16 A

**Approvals/certificates:**  
 - CE Label in accordance with 2006/95/EC, 2004/108/EC, 2011/65/EU  
 - BV BG  
 - VDE GS

**Power cord:**  
 Type: H05W-F 3x1,5mm<sup>2</sup>, white  
 Length: 2,5m  
 Plug: CEE VII/7, DIN49441 Form2

**Material/Finish:**  
 Chassis: closed sheet steel extrusion, zincplated, powder-coated texture  
 Plastic parts: Vampamid 6 0024 VO (UL94) or similar, recyclable  
 Internal conduction: brass conductor rails and copper wires  
 Internal copper wires: H07V-K 1,5mm<sup>2</sup>

**Color:**  
 Chassis:  
 Plastic parts: RAL7035 light grey

**Packaging:**  
 Packing box (csomagolódoboz)  
 Supply schedule:  
 Socket strip (1 piece)  
 Mounting bracket (2 pieces) 3.768.2608  
 User manual (1 piece) 03.300.999.1

| Rev. | Change | Date     | Name |
|------|--------|----------|------|
| A    | 16830  | 13.07.16 | Gali |

| General tolerances | Finish | Material |
|--------------------|--------|----------|
| ISO 2768-m         |        |          |

| Date               | Name   | Description               |
|--------------------|--------|---------------------------|
| Drawn 26.11.2007   | Kovács | <b>DI-STIRP D COMPACT</b> |
| Checked 26.11.2007 | Szabó  |                           |
| Approved           |        |                           |

Drawing no. **03.300.004.X-015.X** Scale

| Gross weight | Net weight | External dimensions of packing box |
|--------------|------------|------------------------------------|
| kg           | kg         | mm                                 |

|    |   |    |                                       |                            |            |              |
|----|---|----|---------------------------------------|----------------------------|------------|--------------|
| 12 | 1 | ST | Vezeték zöld-sárga 1,5mm <sup>2</sup> | Electric cord green-yellow | 3.768.2634 | L=100(EO-EO) |
|----|---|----|---------------------------------------|----------------------------|------------|--------------|

A belső vezetékezés komponensei. / Components of internal wiring.

Platine:

File: