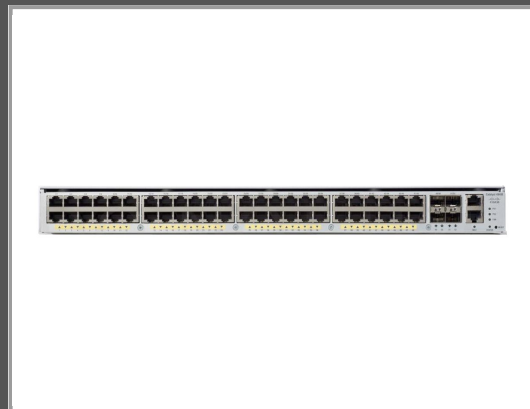


Cisco Catalyst 4948E-F - Switch

L3 - Managed - 48 x 10/100/1000 + 4 x 10 Gigabit SFP+ - back to front airflow - rack-mountable

Group	Network Equipment
Manufacturer	Cisco
Manufacturer item no.	WS-C4948E-F-S
EAN/UPC	0882658384974



Description

The Cisco Catalyst 4948E-F Ethernet Switch is built from the start to deliver class-leading, full-featured server-access switching. The switch offers forty-eight 10/100/1000 Gbps RJ45 downlink ports and four 1/10 Gigabit Ethernet uplink ports and is designed to simplify data center architecture and operations by offering service provider-grade hardware and software in a one Rack Unit (1RU) form factor optimized for full-featured Top-of-Rack (ToR) data center deployments.

The Cisco Catalyst 4948E-F, with its advanced multicast support, is optimized for multimedia applications. It supports Protocol Independent Multicast (PIM), Source-Specific Multicast (SSM), and Pragmatic General Multicast (PGM), providing end users with additional scalability to support multimedia applications. Also supported are Internet Group Management Protocol (IGMP) snooping and Multicast Listener Discovery (MLD) snooping in hardware, enhancing performance and reducing network traffic by allowing a switch to dynamically add and remove hosts from a multicast group.

The Cisco Catalyst 4948E-F offers superior per-port QoS features to help ensure that network traffic is classified, prioritized, and scheduled optimally to efficiently manage bandwidth-intensive multimedia and time-sensitive and mission-critical applications. The Cisco Catalyst 4948E-F can classify, monitor, and mark incoming packets, allowing the administrator to differentiate traffic flows and enforce policies. Sharing, shaping, and strict-priority configurations determine scheduling of egress traffic.

Main features

Product Description	Cisco Catalyst 4948E-F - switch - 48 ports - Managed - rack-mountable
Device Type	Switch - 48 ports - L3 - Managed
Enclosure Type	Back to front airflow rack-mountable 1U
Subtype	Gigabit Ethernet
Ports	48 x 10/100/1000 + 4 x 10 Gigabit SFP+
Performance	Switching capacity: 176 Gbps IPv4 switching: 131 Mpps IPv6 switching: 110 Mpps
Capacity	Active VLANs: 4094 QoS hardware entries: 32000 Spanning Tree Protocol instances: 4094 Switched virtual interfaces (SVIs): 4094
MAC Address Table Size	55K entries
Routing Protocol	RIP-1, RIP-2, EIGRP, IGMPv2, HSRP, IGMP, DVMRP, VRRP, OSPFv2, PIM-SM, IGMPv3, OSPFv3, PIM-SSM, static IPv4 routing, static IPv6 routing, policy-based routing (PBR), RIPng, MLDv2, MLD
Remote Management Protocol	SNMP 1, SNMP 2, RMON 1, RMON 2, RMON 3, RMON 9, Telnet, SNMP 3, HTTPS, TFTP, SSH, SSH-2, CLI

Features	Hot swap module replacement, Layer 3 switching, Layer 2 switching, DHCP support, auto-negotiation, VLAN support, IGMP snooping, traffic shaping, MAC address filtering, Broadcast Storm Control, IPv6 support, Multicast Storm Control, Non-Stop Forwarding (NSF), Spanning Tree Protocol (STP) support, Per-VLAN Spanning Tree (PVST), tunnelling, DHCP snooping, Dynamic Trunking Protocol (DTP) support, Port Aggregation Protocol (PAgP) support, Access Control List (ACL) support, Quality of Service (QoS), Jumbo Frames support, Virtual Route Forwarding-Lite (VRF-Lite), MLD snooping, Dynamic ARP Inspection (DAI), Time Domain Reflectometry (TDR), Per-VLAN Spanning Tree Plus (PVST+), EIGRP Stub Routing
Compliant Standards	IEEE 802.3, IEEE 802.3u, IEEE 802.3z, IEEE 802.1D, IEEE 802.1Q, IEEE 802.3ab, IEEE 802.1p, IEEE 802.3ad (LACP), IEEE 802.1w, IEEE 802.1x, IEEE 802.1s, IEEE 802.3ah, IEEE 802.1ag
Power	AC 120/230 V (50/60 Hz)
Power Redundancy	Optional
Dimensions (WxDxH)	44.4 cm x 49.3 cm x 4.4 cm
Weight	8.6 kg

Extended details

General	
Device Type	Switch - 48 ports - L3 - Managed
Enclosure Type	Back to front airflow rack-mountable 1U
Subtype	Gigabit Ethernet
Ports	48 x 10/100/1000 + 4 x 10 Gigabit SFP+
Performance	Switching capacity: 176 Gbps IPv4 switching: 131 Mpps IPv6 switching: 110 Mpps
Capacity	Active VLANs: 4094 QoS hardware entries: 32000 Spanning Tree Protocol instances: 4094 Switched virtual interfaces (SVIs): 4094
MAC Address Table Size	55K entries
Routing Protocol	RIP-1, RIP-2, EIGRP, IGMPv2, HSRP, IGMP, DVMRP, VRRP, OSPFv2, PIM-SM, IGMPv3, OSPFv3, PIM-SSM, static IPv4 routing, static IPv6 routing, policy-based routing (PBR), RIPng, MLDv2, MLD
Remote Management Protocol	SNMP 1, SNMP 2, RMON 1, RMON 2, RMON 3, RMON 9, Telnet, SNMP 3, HTTPS, TFTP, SSH, SSH-2, CLI
Authentication Method	Secure Shell (SSH), RADIUS, TACACS+, Secure Shell v.2 (SSH2)
Features	Hot swap module replacement, Layer 3 switching, Layer 2 switching, DHCP support, auto-negotiation, VLAN support, IGMP snooping, traffic shaping, MAC address filtering, Broadcast Storm Control, IPv6 support, Multicast Storm Control, Non-Stop Forwarding (NSF), Spanning Tree Protocol (STP) support, Per-VLAN Spanning Tree (PVST), tunnelling, DHCP snooping, Dynamic Trunking Protocol (DTP) support, Port Aggregation Protocol (PAgP) support, Access Control List (ACL) support, Quality of Service (QoS), Jumbo Frames support, Virtual Route Forwarding-Lite (VRF-Lite), MLD snooping, Dynamic ARP Inspection (DAI), Time Domain Reflectometry (TDR), Per-VLAN Spanning Tree Plus (PVST+), EIGRP Stub Routing
Compliant Standards	IEEE 802.3, IEEE 802.3u, IEEE 802.3z, IEEE 802.1D, IEEE 802.1Q, IEEE 802.3ab, IEEE 802.1p, IEEE 802.3ad (LACP), IEEE 802.1w, IEEE 802.1x, IEEE 802.1s, IEEE 802.3ah, IEEE 802.1ag
Processor	1: 1 GHz
RAM	1 GB SDRAM
Status Indicators	Port status, power, link OK, system, link/activity

	Expansion / Connectivity
Interfaces	48 x 1000Base-T RJ-45 4 x SFP+
	Power
Power Device	Internal power supply - hot-plug
Installed Qty	1 (installed) / 2 (max)
Power Redundancy	Optional
Power Redundancy Scheme	1+1 (with optional power supply)
Voltage Required	AC 120/230 V (50/60 Hz)
	Miscellaneous
MTBF	149,261 hours
Compliant Standards	NEBS level 3, ETSI, CISPR 22 Class A, EN 61000-3-2, VCCI Class A ITE, EN 61000-3-3, EN55024, EN50082-1, AS/NZ 3548 Class B, EMC, ICES-003 Class A, RoHS, FCC CFR21 Part 1040, UL 60950-1, IEC 60950-1, EN 60950-1, FCC Part 15 A, IEC 60825-1, CSA C22.2 No. 60950-1, EN 60825-1, EN 55022 Class A, EN 300 386
	Software / System Requirements
Software Included	Cisco IOS IP Base
	Dimensions & Weight
Width	44.4 cm
Depth	49.3 cm
Height	4.4 cm
Weight	8.6 kg
	Manufacturer Warranty
Service & Support	Limited warranty - advance parts replacement - 90 days - response time: 10 days
	Environmental Parameters
Min Operating Temperature	0 °C
Max Operating Temperature	40 °C
Humidity Range Operating	10 - 90% (non-condensing)
Min Storage Temperature	-40 °C
Max Storage Temperature	75 °C

Technical data © 1WorldSync. Subject to technical modifications and errors.